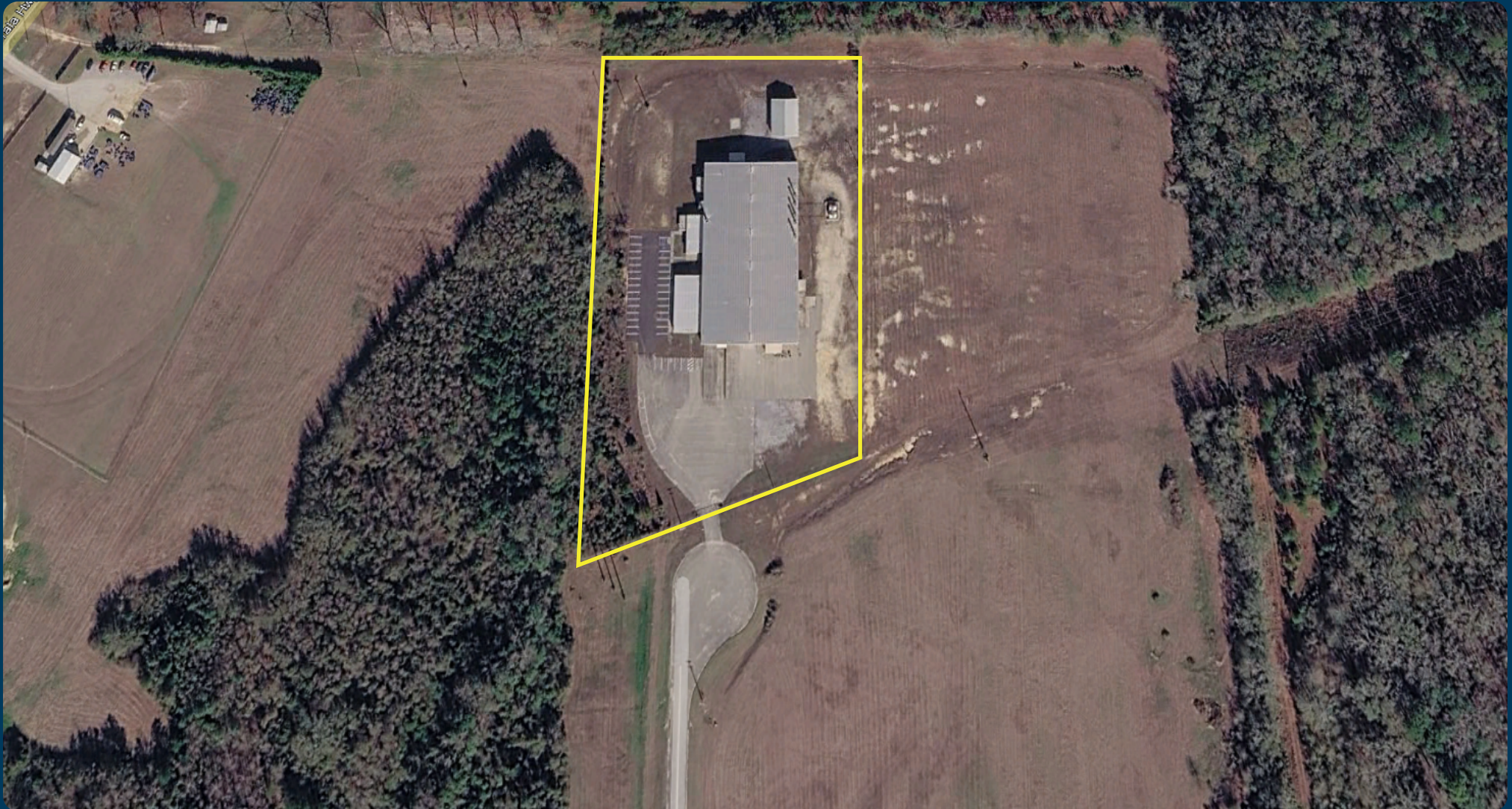


FOR SALE

Class A Office/Warehouse, Manufacturing Facility

18361 Galileo Drive, Opp, Alabama - Covington County





This property is an extremely well maintained industrial warehouse/manufacturing facility in a wonderful business friendly community.

Location

18361 Galileo Drive
Opp, Alabama

Building

Size: 45,455± sf total
3,499± sf office
Year Built: 2009
Lighting: High Bay LED
Fire Protection: Fully sprinkled w/monitored alarm
Loading: 2 dock high doors, electrically operated
2 grade level doors, electrically operated
Eave Heights: 23.5±' at eave
29.5±' at center

Land Area

6.37± Acres
Additional land available

Amenities

1600 amp
3 phase main service
High capacity air compressor
Gas heat in warehouse
2,500± sf shed
Fully fenced with electric gate

Purchase Price

\$1,750,000

Adam J. Metcalfe, SIOR
(251) 432 - 2600
adam@metcalfeco.com

Post Office Box 2903
Mobile, AL 36652

www.metcalfeco.com

The information provided for by the company is subject to errors, omissions, changes, prior sale or lease and withdrawal from the market without notice by the owner. This information has been gathered from sources that are deemed to be reliable, however there is no warranty or guarantee to its accuracy or validity. You are hereby advised to independently verify the information presented herein.





